

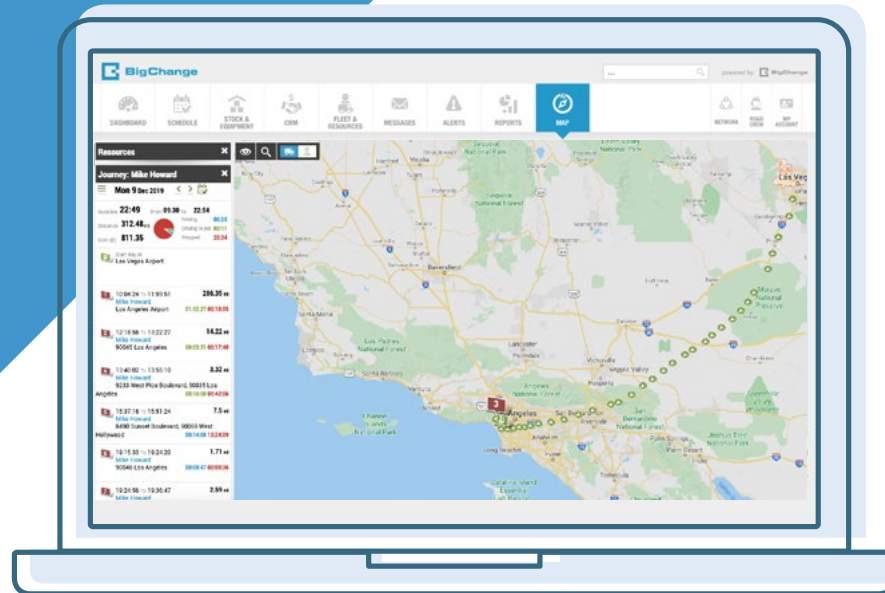


REAL-TIME VEHICLE AND ASSET TRACKING

MOBILE DEVICE TRACKING ON ANDROID

BIGCHANGE OFFER TWO METHODS OF TRACKING RESOURCES, EITHER BY FITTING A PURPOSE-BUILT TRACKER TO A VEHICLE, OR BY UTILISING THE GPS WITHIN A MOBILE DEVICE.

Device based tracking is a convenient method of tracking resources who undertake long trips that use a variety of modes of transport. This makes it a consideration for those who travel on public transport. A snail trail of the journeys can be seen on the map, alerts can be created and triggered, and locations of job activities logged.



POINTS TO NOTE

Tracking via mobile devices sometimes is not as accurate as purpose built hardwired tracking and accuracy can be affected on occasion when making calls, sending text messages changing connection methods whilst travelling or using data/processor intensive applications.

Tracking on a mobile device can use more power, to ensure your mobile device does not have its battery drained by one application Android closely monitor power usage and can close applications if the device battery drops below a certain level.

Mobile device tracking works best on devices which have a battery of over 30% (ideally on charge) and where JobWatch is being run in the foreground.

If the JobWatch application is minimised and another application is opened, tracking may continue without issue however should battery drop below a certain level, or any other application require extensive processing the application manager may terminate the JobWatch App without warning or notification.

Should this happen tracking will restart when the JobWatch App is re-opened however the data between the App being closed and re-opened will not have been saved.

BigChange use APIs provided by Google. Google have reserved the right to change functionality and use of APIs without warning or notification. Should this occur the functionality offered by device tracking may change without notice.

Due to limitations imposed by Apple, it is not possible to offer reliable device tracking via iOS at this time.

FEATURE COMPARISON AT A GLANCE

Feature	Hardwired Tracking	Mobile Device Tracking Android
TRACKING INTERVAL		
Standard	c.60 seconds or one mile or turn more 65°	c.60 seconds if speed > 5mph *
Customisable	Bespoke config can be applied to change behaviour **	Tracking interval can be fixed regardless of speed for when a job is started (e.g hand gritting or high access work) *
TRACKING OPTIONS		
Ignition On/Off (Hardwired) or when device switched on (Mobile Device)	Yes	Yes
When signed in to JobWatch	Yes	Yes
When on way to job	Yes	Yes
DRIVER BEHAVIOUR		
Speeding	Yes	Yes
Idling, harsh acceleration, harsh breaking, cornering	Yes	Not available
REPORTING & ALERTS		
Alerts triggered on events	Yes	Yes
Driver behaviour and journey reports	Yes	Yes

* Additional charges may apply

** Please advise us of your requirements prior to ordering.